



**ROMÂNIA**  
**JUDEȚUL BRAȘOV**



**CONSILIUL LOCAL AL MUNICIPIULUI FĂGĂRAȘ**

Strada Republicii, Nr. 3, 505200, Tel: 0268 - 211313, Fax: 0268 - 213020  
Web: www.primaria-fagaras.ro, Email: secretariat@primaria-fagaras.ro

**HOTĂRÂREA nr.363**  
**din data de 31 octombrie 2018**

- privind modificarea **Organigramei si a statului de functii ale Spitalului Municipal „Dr. Aurel Tulbure” Fagaras**

**Consiliul Local al Municipiului Făgăraș , intrunit in sedinta ordinară,**

Avand in vedere referatul nr.33.437/23.10.2018 al Compartimentului Resurse Umane prin care se propune aprobarea modificarilor din statul de functii din cadrul Spitalului Municipal „Dr. Aurel Tulbure” Fagaras, referatul Spitalului Municipal nr.11.231/17.10.2018, modificare prevazuta in Adresa nr.11.474/23.10.2018 ,

Ținând seama de avizul favorabil al Comisiei de studii, prognoze economico-sociale, buget finanțe și administrarea domeniului public și privat al municipiului, al Comisiei pentru servicii publice, pentru comerț și agricultură, precum și al Comisiei pentru administrația publică locală, juridică, apărarea ordinii publice, respectarea drepturilor și libertăților cetățenești, problemele minorităților,

Vazand Hotararea Consiliului de Administratie nr.31/17.10.2018 a Spitalului Municipal „Dr. Aurel Tulbure” Fagaras privind aprobarea organigramei si a statului de functii,

Tinand seama de prevederile Legii nr.95/2006 privind reforma in domeniul sanatatii, modificata si completata si ale art.36 alin.(2) lit.”d” si alin.6 lit.”a” pct.2 din Legea nr.215/2001 a administratiei publice locale,

În temeiul art.45, alin.(1) si art.115 alin (1) lit.”b”, din Legea Administrației Publice Locale nr.215/2001 republicata si actualizata,

**HOTĂRĂȘTE :**

**Art.1** – Se aprobă modificarea **Organigramei si a statului de functii ale Spitalului Municipal „Dr. Aurel Tulbure” Fagaras**, conform anexelor ce fac parte integranta a prezentei hotărâri.

**Art.2** – Cu ducerea la îndeplinire a prevederilor prezentei hotărâri, se încredințează Spitalul Municipal „Dr. Aurel Tulbure” Fagaras și Compartimentul Resurse Umane.

**PREȘEDINTE DE ȘEDINȚĂ,**  
**LASCU IULIAN**



**CONTRASEMNEAZĂ,**  
**Secretarul municipiului,**  
**LAURA ELENA GIUNCA**

Hotărârea s-a adoptat cu **16 voturi pentru**  
Consilieri în funcție-19  
Consilieri prezenți-16

**Prezenta hotărâre se comunică:**

- 1 ex. Dosar ședință
- 1 ex. Colecție
- 1 ex. Prefectură
- 1 ex. Primar
- 1 ex. Secretar
- 1 ex Spitalul Municipal "Dr. Aurel Tulbure" Fagaras
- 1 ex. Compartimentul Resurse Umane
- 1 ex. Afișare

Cod : F- 50

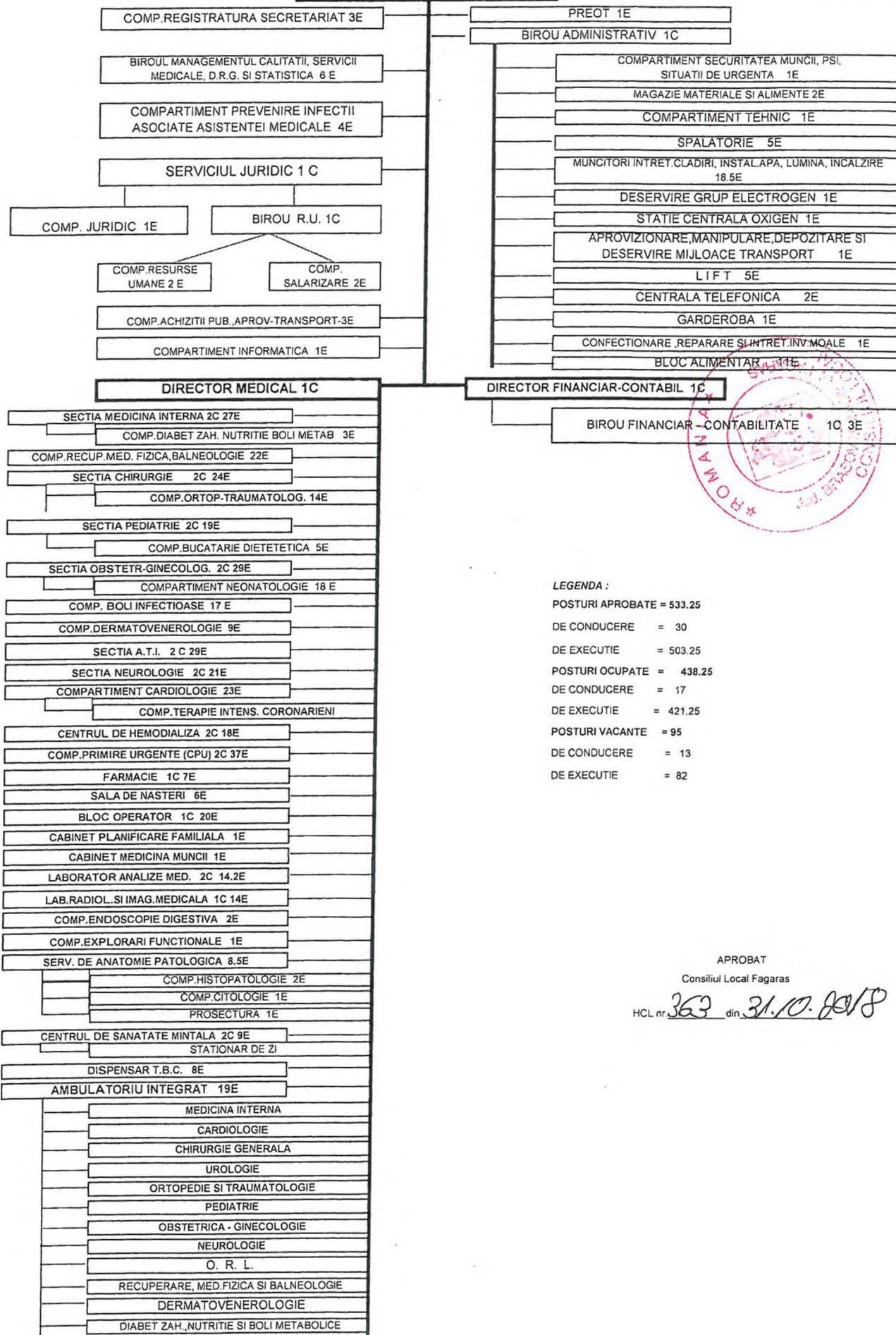


CONSILIU DE ADMINISTRATIE

MANAGER 1C

Aprobat

Hot. Cons. de Admin nr. 31/17.10.2018



LEGENDA :

POSTURI APROBATE = 533.25  
 DE CONDUCERE = 30  
 DE EXECUTIE = 503.25  
 POSTURI OCUPATE = 438.25  
 DE CONDUCERE = 17  
 DE EXECUTIE = 421.25  
 POSTURI VACANTE = 95  
 DE CONDUCERE = 13  
 DE EXECUTIE = 82

APROBAT

Consiliul Local Fagaras

HCL nr. 363 din 31.10.2018

U.A.T. MUNICIPIUL FAGARAS  
 Unitatea Sanitara : Spitalul Municipal "Dr.Aurel Tulbure " Fagaras  
 Adresa : Str. Ghiocilor Nr. 1  
 Nr. Paturi: 273 spitalizare continua  
 32 spitalizare de zi

Aprobat HCA nr 31/17 10.2018

**STAT DE FUNCTII**  
**01.11.2018**

Nr Cr	Funcția	Specialitate	Nivel Studii	Cuan-tum post	Gradatia	Observatii
1	2	3	4	5.00	6	6

1. Manager

1	Manager	economist	S	1.00	II	
---	---------	-----------	---	------	----	--

1.1 Comp.Registratura Secretariat

2	Secretara		M	1.00	2	vacant
3	Secretar Dactilograf		M	1.00	2	
4	Arhivar I		M	1.00	5	

1.2 Biroul de Management al Calitatii Serviciilor Medicale ,D.R.G. si Statistica

5	Medic	Medicina generala	S	1.00	2	Vacant
6	Consilier Juridic I A	Jurist	S	1.00	3	
7	Economist deb.	Economist	S	1.00	baza	Vacant
8	Statistician Medical Principal		M	0.50	5	vacant
9	Statistician Medical Principal		M	0.50	5	
10	Registrator med.		M	1.00	5	
11	Registrator medical deb		PL	1.00	5	

1.3 Compartiment de Prevenire Infectiei Asociate Actului Medical

12	Medic	Epidemiologie	S	1.00	5	Vacant
13	Medic Rezident an I	Epidemiologie	S	1.00	baza	Vacant

Personal sanitar mediu

14	Asistent medical princ.	Medicala	PL	1.00	2	
----	-------------------------	----------	----	------	---	--

Personal sanitar auxiliar

15	Infirmier	Dezinfectior	G	1.00	3	
----	-----------	--------------	---	------	---	--

1.4 Serviciul Juridic

16	Sef serviciu juridic	juridic	S	1.00	II	Vacant
----	----------------------	---------	---	------	----	--------

1.4.1 Comp.juridic

17	Consilier juridic 1		S	1.00	5	Vacant
----	---------------------	--	---	------	---	--------

1.4.2. Birou Resurse umane

18	Sef Birou Resurse umane	Juridic	S	1.00	II	
----	-------------------------	---------	---	------	----	--

1.4.2.1 Compartiment R.U.

19	Referent 1A		M	1.00	5	
----	-------------	--	---	------	---	--

20	Referent spec.2		S	1.00	5	
----	-----------------	--	---	------	---	--

1.4.2.2 Comp. salarizare

21	Economist II	economic	S	1.00	5	Vacant
----	--------------	----------	---	------	---	--------

22	Referent 1A		M	1.00	5	
----	-------------	--	---	------	---	--

1.5 Compartiment Achizitii Publice ,Aprovizionare, transport

Personal superior

23	Referent de spec. gr.I	Stinte Administrat.	S	1.00	4	
24	Referent de spec. gr.I	Economice	S	1.00	4	
25	Referent de specialitate gr. I		S	1.00	4	vacant

1.6. Compartiment Informatica

Personal superior

26	Analist (programator) debutant	informatica	S	1.00	5	
----	--------------------------------	-------------	---	------	---	--

1.7 Preot

27	Preot I		S	1.00	4	
----	---------	--	---	------	---	--

1.8 Biroul Administrativ

28	Sef Birou Administrativ	Juridic	S	1.00	II	Vacant
----	-------------------------	---------	---	------	----	--------

1.8.1. Compartiment securitatea muncii, PSI, protectie civila si situatii de urgenta

29	Muncitor 1	Cadru teh.PSI	M	1.00	5	
----	------------	---------------	---	------	---	--

1.8.2 Magazie materiale si alimente

30	Magaziner I	Magazie materiale	M	1.00	5	
----	-------------	-------------------	---	------	---	--

31	Magaziner I	Magazie alimente	M	0.50	5	
32	Magaziner I	Magazie alimente	M	0.50	5	vacant

1.8.3. Compartiment Tehnic

33	Referent II		M	1.00	1	
----	-------------	--	---	------	---	--

1.8.4 Spalatorie

34	Spalatoarea cu gestune		G	1.00	5	
35	Spalatoarea		G	1.00	5	
36	Spalatoarea		G	1.00	5	
37	Spalatoarea		G	1.00	5	
38	Spalatoarea		G	1.00	5	

1.8.5. Muncitori intretinere cladiri, instalatii de apa si lumina si incalzire

39	Muncitor I	instalator de apa si canal	G	1.00	5	
40	Muncitor I	lampar universal	G	1.00	5	
41	Muncitor necalificat	muncitor necalificat	G	1.00	5	vacant
42	Muncitor I	electrician de intretinere si reparatii	G	1.00	5	
43	Muncitor I	electrician de intretinere si reparatii	G	1.00	5	
44	Muncitor I	electrician de intretinere si reparatii	G	1.00	5	
45	Muncitor I	electrician de intretinere si reparatii	G	1.00	5	
46	Muncitor I	instalator de apa si canal	G	1.00	5	VACANT
47	Muncitor necalificat	MUNCITOR NECALIFICAT	G	1.00	5	VACANT
48	Muncitor necalificat	MUNCITOR NECALIFICAT	G	1.00	5	VACANT
49	Muncitor necalificat	MUNCITOR NECALIFICAT	G	1.00	5	VACANT
50	Muncitor necalificat	MUNCITOR NECALIFICAT	G	1.00	5	VACANT
51	Muncitor necalificat	MUNCITOR NECALIFICAT	G	1.00	5	VACANT
52	Muncitor necalificat	MUNCITOR NECALIFICAT	G	1.00	5	VACANT
53	Muncitor necalificat	MUNCITOR NECALIFICAT	G	1.00	5	VACANT
54	Muncitor necalificat	MUNCITOR NECALIFICAT	G	1.00	5	VACANT
55	Muncitor necalificat	MUNCITOR NECALIFICAT	G	1.00	5	VACANT
56	Muncitor necalificat	MUNCITOR NECALIFICAT	G	1.00	5	VACANT
57	Muncitor necalificat	MUNCITOR NECALIFICAT	G	0,5	5	

1.8.6. Deservire grup electrogen

58	Muncitor I	electrician de intretinere si reparatii	G	1.00	5	
----	------------	---	---	------	---	--

1.8.7. Statie centrala de oxigen

59	Muncitor Necalificat		G	1.00	5	
----	----------------------	--	---	------	---	--

1.8.8. provizionare, manipulare, depozitare si deservire mijloace de transport

60	Sofer I	Sofer	G	1.00	5	
----	---------	-------	---	------	---	--

1.8.9 LR

61	Muncitor I	Liftier	G	1.00	5	
62	Muncitor IV	Liftier	G	1.00	4	
63	Muncitor III	Liftier	G	1.00	5	
64	Muncitor III	Liftier	G	1.00	5	
65	Muncitor III	Liftier	G	1.00	5	

1.8.10. Centrala Telefonica

66	Muncitor II	telefonista	G	1.00	5	
67	Muncitor necalificat		G	1.00	5	

1.8.11. Garderoba

68	Muncitor I	Garderobier	G	1.00	5	
----	------------	-------------	---	------	---	--

1.8.12. Confectionare, Reparare si Intretinere Inventar Moate

69	Muncitor I	Lămpărie	G	1.00	5	
----	------------	----------	---	------	---	--

1.8.13. Bloc Alimentar

Personal bucatarie

70	Muncitor I	Bucatar	G	1.00	5	
71	Muncitor I	Bucatar	G	1.00	5	
72	Muncitor I	Bucatar	G	1.00	5	
73	Muncitor I	Bucatar	G	1.00	5	
74	Muncitor Necalificat		G	1.00	5	
75	Muncitor Necalificat		G	1.00	5	
76	Muncitor Necalificat		G	1.00	5	
77	Muncitor Necalificat		G	1.00	5	
78	Muncitor Necalificat		G	1.00	5	
79	Asistenta Principala	Dietetician	PL	1.00	5	
80	Asistenta Medical debutant	Dietetician	S	1.00	0	

1.9 Director medical

81	Director Medical		S	1.00	II	
----	------------------	--	---	------	----	--

1.9.1. Sectia Medicina interna nr. paturi 40, suprafata curatenie:661mp

Pers. sanitar superior

82	Medic Primar - Sef Sectie	Medicina Interna	S	1.00	II	Vacant
83	Medic Primar	Medicina Interna	S	1.00	5	
84	Medic Primar	Medicina Interna	S	1.00	3	
85	Medic specialist	Medicina Interna	S	1.00	4	
86	Medic Specialist	Medicina Interna	S	1.00	3	
87	Medic Specialist	Medicina Interna	S	1.00	3	Vacant
88	Medic specialist	Medicina Interna	S	1.00	3	

Personal sanitar mediu

89	Asistenta Principala	Medicala	PL	1.00	5	
90	Asistenta medicala	Medicala	PL	1.00	2	Vacant
91	Asistenta Principala	Medicala	PL	1.00	5	
92	Asistenta Principala	Medicala	PL	1.00	5	
93	Asistenta Principala	Medicala	PL	1.00	5	
94	Asistenta Principala	Medicala	PL	1.00	3	
95	Asistenta Medicala	Medicala	PL	1.00	4	
96	Asistenta Medicala	Medicala	S	1.00	0	
97	Asistenta principala	Medicala	PL	1.00	2	
98	Asistenta medicala	Medicala	PL	1.00	5	
99	Asistenta Medicala	Medicala	PL	1.00	1	
100	Asistenta Principala Sef	Medicala	PL	1.00	3	
101	Asistenta Medicala	Medicala	PL	1.00	3	

Personal sanitar auxiliar

102	Infirmiera		G	1.00	5	
103	Ingrijitor		G	1.00	4	
104	Infirmiera		G	1.00	5	Vacant
105	infirmiera		G	1.00	5	
106	Ingrijitor		G	1.00	3	
107	Infirmiera		G	1.00	5	
108	Infirmiera		G	1.00	5	
109	Infirmiera		G	1.00	5	
110	Registrator medical debutant		G	1.00	5	vacant

1.9.1.1 Compartiment Diabet Zaharat , Nutritie si Boli Metabolice - 5 paturi

Pers. sanitar superior

111	Medic specialist	Diab. Zah. Nutri	S	1.00	5	
112	Medic specialist	Diab. Zah. Nutri	s	1.00		vacant
113	Medic Rezident an II	Diab. Zah. Nutri	S	1.00	Baza	

1.9.2 Compartiment Recuperare , Medicina fizica si balneologie - 20 paturi, suprafata curatenie.661mp

Personal sanitar superior

114	Kineto Terapeut princ.	Kineto Terapie	S	1.00	3	
115	Medic specialist	Baln. Recup. med	S	1.00	3	
116	Fiziokinetoterapeut	Kineto Terapie	S	1.00	baza	

Personal sanitar mediu

117	Asistent Principal	Fizioterapie	PL	1.00	5	
118	Asistenta Principala	Fizioterapie	PL	1.00	5	
119	Asistenta Principala	Fizioterapie	PI	1.00	5	
120	Asistenta Principala	Fizioterapie	PL	1.00	5	
121	Asistenta Principala-coord.	Medicala	PL	1.00	4	
122	Asistenta Principala	Medicala	PL	1.00	5	
123	Asistenta Medicala	Medicala	pl	1.00	3	
124	Asistenta Principala	Medicala	PL	1.00	4	
125	Asistenta Principala	Fizioterapie	PL	1.00	5	
126	Asistenta Principala	Masaj	PL	1.00	5	
127	Asistenta Principala	Medicala	PL	1.00	5	
128	Asistenta Medicala	Masaj	PL	1.00	3	
129	Asistenta Principala	Masaj	PL	1.00	5	
130	Asistenta Principala	Masaj	PL	1.00	5	vacant

Personal sanitar auxiliar

131	infirmier		G	1.00	2	
132	infirmier		G	1.00	5	
133	infirmier		G	1.00	5	
134	infirmier		G	1.00	5	

135	Infirmier		G	1.00	5	
-----	-----------	--	---	------	---	--

1.9.3. Sectia Chirurgie Generala - 48 paturi; suprafata curatenie:661mp

Personal sanitar superior

136	Medic Primar -Sef sectie	Chirurgie	S	1.00	1	
137	Medic Primar	Chirurgie	S	1.00	5	
138	Medic Primar	Chirurgie	S	1.00	5	
139	Medic Primar	Chirurgie	S	1.00	4	
140	Medic Specialist	Chirurgie	S	1.00	5	
141	Medic rezident an III	Chirurgie	S	1.00	baza	

Personal sanitar mediu

142	Asistenta Principala Sefa	Medicala	PL	1.00	1	
143	Asistenta Medicala	Medicala	PL	1.00	1	
144	Asistenta Principala	Medicala	PL	1.00	5	
145	Asistenta Medicala	Medicala	PL	1.00	1	
146	Asistenta Principala	Medicala	PL	1.00	5	
147	Asistenta Principala	Medicala	PL	1.00	5	
148	Asistenta Principala	Medicala	PL	1.00	5	
149	Asistenta Principala	Medicala	PL	1.00	5	
150	Asistenta Medicala	Medicala	PL	1.00	baza	cim susp
151	Asistenta principala	Medicala	ssd	1.00	4	

Personal sanitar auxiliar

152	Infirmier		G	1.00	5	
153	Infirmier		G	1.00	baza	
154	Infirmier		G	1.00	5	
155	Infirmier		G	1.00	5	
156	Ingrijitor		G	1.00	3	
157	Infirmiera		G	1.00	3	
158	Ingrijitor		G	1.00	5	
159	Ingrijitor		G	1.00	0	
160	Ingrijitor		G	1.00	0	
161	Registrator medical debutant		G	1.00		vacant

1.9.3.1. Compartiment Ortopedie si Tramalogie - 8 paturi, suprafata curatenie:265mp

Personal sanitar superior

162	Medic Primar-coord.	Ortop.-Tramat.	S	1.00	4	
163	Medic Specialist	Ortop.-Tramat.	S	1.00	2	
164	Medic Specialist	Ortop.-Tramat.	S	1.00	2	
165	Medic Specialist	Ortop.-Tramat.	S	1.00	2	

Personal sanitar mediu

166	Asistenta Principala	Medicala	PL	1.00	5	
167	Asistenta Principala-coord	Medicala	PL	1.00	5	
168	Asistenta Principala	Medicala	PL	1.00	4	
169	Asistenta Principala	Medicala	PL	1.00	5	
170	Asistenta Medicala	Medicala	S	1.00	2	

Personal sanitar auxiliar

171	Infirmier		G	1.00	4	
172	Infirmier		G	1.00	3	
173	Infirmier		G	1.00	5	
174	Infirmier		G	1.00	5	
175	Infirmier deb		G	1.00	4	

1.9.4. Sectia Pediatrie - 25 paturi; suprafata curatenie:546 mp

Personal sanitar superior

176	Medic primar -sef sectie	Pediatrie	S	1.00	1	
177	Medic primar	Pediatrie	S	1.00	4	
178	Medic specialist	Pediatrie	S	1.00	4	
179	Medic specialist	Pediatrie	S	1.00	2	
180	Medic Rezident an III	Pediatrie	S	1.00	4	

Personal sanitar mediu

181	Asistenta Principala Sefa	Pediatrie	PL	1.00		
182	Asistenta Principala	Pediatrie	PL	1.00	5	
183	Asistenta Principala	Pediatrie	PL	1.00	5	
184	Asistenta Principala	Pediatrie	PL	1.00	5	
185	Asistenta Principala	Medicala	PL	1.00	4	
186	Asistenta Principala	Medicala	PL	1.00	4	
187	Asistenta Medicala deb.	Medicala	PL	1.00	baza	vacant
188	Asistenta Medicala Principala	Medicala	PL	1.00	4	
189	Asistenta Principala	Medicala	PL	1.00	5	
190	Asistenta Medicala prin.	Medicala	PL	1.00	4	

Personal sanitar auxiliar

191	Infirmier		G	1.00	5	
192	Ingrijitor		G	1.00	4	
193	Infirmier		G	1.00	4	
194	Infirmier		G	1.00	4	
195	Infirmiera		G	1.00	2	
196	Infirmiera		G	1.00	baza	

1.9.4.1 Compartiment Bucatarie dietetica; suprafata curatenie: 36 mp

Personal sanitar mediu

197	Asistenta Principala	Medicala	PL	1.00	5	
198	Asistenta Principal	Medicala	PL	1.00	3	
199	Asistent Principala	Medicala	PL	1.00	2	

Personal sanitar auxiliar

200	Ingrijitor		G	1.00	5	
-----	------------	--	---	------	---	--

201	Ingrijitor		G	1.00	5	
-----	------------	--	---	------	---	--

1.9.5. Sectia Obstetrica Ginecologie - 45 paturi; suprafata curatenie:1580 mp

Personal sanitar superior

202	Medic Primar Sef sectie	Obstr. Ginec.	S	1.00		vacant
203	Medic Primar	Obstr. Ginec.	S	1.00	5	
204	Medic Primar	Obstr. Ginec.	S	1.00	3	
205	Medic Primar	Obstr. Ginec.	S	1.00	5	
206	Medic Primar	Obstr. Ginec.	S	1.00	3	
207	Medic Specialist	Obstr. Ginec.	S	1.00	2	
208	Medic rezident an II	Obstr. Ginec.	S	1.00	baza	
209	Medic specialist	Obstr. Ginec.	S	1.00	2	

Personal sanitar mediu

210	Asistenta Principala	Obstr. Ginec.	PL	1.00	5	
211	Asistenta Principala	Obstr. Ginec.	PL	1.00	5	
212	Asistenta Principala	Obstr. Ginec.	PL	1.00	5	
213	Asistenta medicala	medicala	S	1.00	2	vacant
214	Asistenta medicala	medicala	S	1.00	2	vacant

Sterilizare

Personal sanitar mediu

215	Asistenta Principala	Obstr. Ginec.	PL	1.00	5	
216	Asistenta Medicala	Medicala	PL	1.00	3	

Personal sanitar auxiliar

217	Infirmier		G	1.00	5	
218	Infirmier		G	1.00	5	
219	Ingrijitor		G	1.00	5	
220	Infirmier		G	1.00	5	
221	Ingrijitor		G	1.00	3	
222	Infirmier deb		G	1.00	4	
223	Ingrijitor		G	1.00	2	
224	Ingrijitor		G	1.00	2	
225	Infirmier		G	1.00	5	vacant
226	Ingrijitor		G	1.00	2	vacant

1.9.5.1 Compartiment Neonatologie - 15 paturi; suprafata curatenie: 340 mp

Personal sanitar superior

227	Medic Specialist coordonator	Pediatrie	S	1.00	2	
228	Medic rezident an IV	Neonatologie	S	1.00	1	vacant
229	Medic rezident an III	Neonatologie	S	1.00	baza	
230	Asistent Social Principal	Asistent Social	S	1.00	3	

Personal sanitar mediu

231	Asistenta Medicala	Pediatrie	PL	1.00	5	
232	Asistenta Principala	Pediatrie	PL	1.00	5	
233	Asistenta Principala	Pediatrie	PL	1.00	5	
234	Asistenta Principala-coord.	Medicala	PL	1.00	5	
235	Asistenta Principala	Medicala	PL	1.00	5	
236	Asistenta Principala	Pediatrie	PL	1.00	3	
237	Asistenta Principala	Medicala	PL	1.00	5	

Personal sanitar auxiliar

238	Infirmier		G	1.00	5	
239	Infirmier		G	1.00	4	
240	Infirmier		G	1.00	5	
241	Infirmier		G	1.00	3	
242	Infirmier deb		G	1.00	5	
243	Ingrijitor		G	1.00	2	vacant
244	Ingrijitor		G	1.00	2	vacant

1.9.6 Compartiment Boli infectioase - 20 paturi; suprafata curatenie: 920 mp

Personal sanitar superior

245	Medic primar	Boli infectioase	S	1.00	5	
246	Medic specialist	Boli infectioase	S	1.00	1	vacant
247	Medic rezident an III	Boli infectioase S	S	1.00	1	

Personal sanitar mediu

248	Asistenta Principala Coordonator	Medicala	PL	1.00	5	
249	Asistenta Principala	Medicala	PL	1.00	5	
250	Asistenta Principala	Medicala	PL	1.00	5	
251	Asistenta Principala	Medicala	PL	1.00	5	
252	Asistenta Principala	Medicala	PL	1.00	5	
253	Asistenta Principala	Medicala	PL	1.00	3	susp. CIC
254	Asistenta Principala	Medicala	PL	1.00	5	

Personal sanitar auxiliar

255	Infirmier		G	1.00	5	
256	Infirmier		G	1.00	5	
257	Infirmier		G	1.00	4	
258	Ingrijitor		G	1.00	5	
259	Ingrijitor		G	1.00	5	
260	Infirmier		G	1.00	baza	
261	Ingrijitor		G	1.00	2	

1.9.7 Compartiment Dermato Venerologie - 5 paturi; suprafata curatenie: 127 mp

Personal sanitar superior

262	Medic Primar coordonator	Dermato. Vener.	S	0,5	5	
263	Medic primar	Dermato. Vener.	s	0,5	5	vacant
264	Medic Rezident an II	Dermato. Vener.	S	1.00	Baza	

Personal sanitar mediu



265	Asistenta Medicala	Medicala	S	1.00	baza	
266	Asistenta principala coordonator	Medicala	PL	1.00	3	
267	Asistenta Principala	Medicala	PL	1.00	5	
268	Asistenta Principala	Medicala	PL	1.00	5	
Personal sanitar auxiliar						
269	Infirmiera		G	1.00	5	
270	Infirmiera		G	1.00	5	
271	Infirmiera		G	1.00	2	

1.9.8 Sectia ATI - 15 paturi; suprafata curatenie: 198 mp

Personal sanitar superior

272	Medic Primar - sef	A.T.I.	S	1.00	5	vacant
273	Medic primar	A.T.I.	S	1.00	5	
274	Medic rezident an V	A.T.I.	S	1.00	2	cim susp
275	Medic rezident an V	A.T.I.	S	1.00	1	
276	Medic specialist	A.T.I.	S	1.00	5	
277	Medic specialist	A.T.I.	S	1.00	5	vacant
278	Medic specialist	A.T.I.	S	1.00	5	vacant
279	Medic rezident an II	A.T.I.	S	1.00	baza	

Personal sanitar mediu

280	Asistenta Principala	Medicala	PL	1.00	5	
281	Asistenta Principala	Medicala	PL	1.00	5	
282	Asistenta Principala	Medicala	PL	1.00	4	
283	Asistenta Principala	Medicala	PL	1.00	3	
284	Asistenta Principala	Medicala	PL	1.00	5	
285	Asistenta Principala	Medicala	PL	1.00	5	
286	Asistenta Principala	Medicala	PL	1.00	3	cim susp
287	Asistenta Principala	Medicala	PL	1.00	3	
288	Asistenta Medicala princ	Medicala	PL	1.00	3	
289	Asistenta Principala	Medicala	PL	1.00	3	
290	Asistenta Principala	Medicala	PL	1.00	4	
291	Asistenta Principala	Medicala	PL	1.00	4	
292	Asistenta Principala	Medicala	PL	1.00	4	
293	Asistenta Medicala	Medicala	S	1.00	baza	
294	Asistenta Medicala	Medicala	PL	1.00	2	
295	Asistenta Principala sef	Medicala	PL	1.00	5	
296	Asistenta Medicala	Medicala	PL	1.00	2	

Personal sanitar auxiliar

297	Infirmier		G	1.00	5	
298	Infirmier		G	1.00	4	
299	Infirmier		G	1.00	5	
300	Ingrijitor		G	1.00	4	
301	Ingrijitor		G	1.00	4	
302	Infirmier		G	1.00	5	

1.9.9 Sectia Neurologie - 35 paturi; suprafata curatenie:661mp

Personal sanitar superior

303	Medic Primar - Sef Sectie	Neurologie	S	1.00	1	vacant
304	Medic Primar	Neurologie	S	1.00	5	
305	Medic Specialist	Neurologie	S	1.00	2	vacant
306	Medic Specialist	Neurologie	S	1.00	2	
307	Medic rezident an IV	Neurologie	S	1.00	2	

Personal sanitar mediu

308	Asistenta Principala	Medicala	PL	1.00	5	
309	Asistenta Medicala	Medicala	PL	1.00	baza	
310	Asistenta Medicala	Medicala	PL	1.00	2	
311	Asistenta Principala	Medicala	PL	1.00	5	
312	Asistenta Principala	Medicala	PL	1.00	5	
313	Asistent Principala	Medicala	PL	1.00	3	
314	Asistenta Principala	Medicala	PL	1.00	4	cim susp
315	Asistenta Principala	Medicala	PL	1.00	5	
316	Asistenta Medicala	Medicala	PL	1.00	2	
317	Asistenta Principala sef	Medicala	PL	1.00	5	
318	Asistenta Medicala	Medicala	PL	1.00	3	

Personal sanitar auxiliar

319	Infirmier		G	1.00	5	
320	Infirmier		G	1.00	5	
321	Infirmier		G	1.00	5	
322	Infirmier		G	1.00	3	
323	Infirmier		G	1.00	5	
324	Ingrijitor		G	1.00	5	
325	Infirmier		G	1.00	5	vacant

1.9.10 Compartiment Cardiologie - 20 paturi; suprafata curatenie:353 mp

Personal sanitar superior

326	Medic Specialist coordonator	Cardiologie	S	1.00	5	
327	Medic Specialist	Cardiologie	S	1.00	2	
328	Medic Specialist	Cardiologie	S	1.00	2	vacant
329	Medic rezident an III	Cardiologie	S	1.00	2	
330	Medic rezident an II	Cardiologie	S	1.00	baza	

Personal sanitar mediu

331	Asistenta Principala coord.	Medicala	PL	1.00	5	
332	Asistenta Principala	Medicala	PL	1.00	5	
333	Asistenta Principala	Medicala	PL	1.00	5	
334	Asistenta Medicala	Medicala	PL	1.00	1	

335	Asistenta principala	Medicala	PL	1.00	3	
336	Asistenta Principala	Medicala	PL	1.00	4	
337	Asistenta Principala	Medicala	PL	1.00	5	
338	Asistenta Principala	Medicala	PL	1.00	3	
339	Asistenta Medicala	Medicala	PL	1.00	1	
340	Asistenta medicala	Medicala	PL	1.00	1	
341	Asistenta Principala	Medicala	PL	1.00	5	

Personal sanitar auxiliar

342	Infirmier		G	1.00	5	
343	Infirmier		G	1.00	5	
344	Infirmier		G	1.00	3	vacant
345	Infirmiera		G	1.00	2	
346	Infirmiera		G	1.00	4	cim susp
347	Ingrijitoare		G	1.00	4	
348	Ingrijitor		G	1.00	baza	

1.9.11 Centrul de Hemodializa - 9 aparate, suprafata curatenie: 265 mp

Personal sanitar superior

349	Medic Spec. - Sef centru hemodializa	Nefrologie	S	1.00	1	Vacant
350	Medic Spec.	Nefrologie	S	1.00	2	Vacant
351	Medic specialist	Nefrologie	S	1.00	2	
352	Medic Spec.	Nefrologie	S	1.00	2	Vacant
353	Medic rezident an III	Nefrologie	S	1.00	baza	

Personal sanitar mediu

354	Asistenta Principala	Medicala	PL	1.00	5	
355	Asistenta Principala	Medicala	PL	1.00	4	
356	Asistenta Principala sefa	Medicala	PL	1.00	4	
357	Asistenta Principala	Medicala	PL	1.00	3	
358	Asistenta Principala	Medicala	PL	1.00	4	
359	Asistenta principala	Medicala	PL	1.00	4	
360	Asistenta Principala	Medicala	PL	1.00	3	
361	Tehnician ap.med.	Aparat. Med.	PL	0.50	4	
362	Asistenta Principala	Medicala	PL	1.00	5	
363	Tehnician ap.med.	Aparat. Med.	PL	0.50	4	Vacant
364	Tehnician ap.med.	Aparat. Med.	PL	1.00	4	Vacant

Personal sanitar auxiliar

365	Infirmier		G	1.00	3	
366	Infirmiera		G	1.00	5	
367	Infirmier deb		G	1.00	baza	cim susp
368	Sofer		G	1.00	1	
369	Sofer		G	1.00	3	

1.9.12 Compartiment de Primiri Urgente:suprafata de curatenie390mp

Personal sanitar superior

370	Medic Specialist - sef CPU	Med.urgenta	S	1.00	II	vacant
371	Medic	Medicina generala	S	1.00	5	
372	Medic	Medicina generala	S	1.00	3	CIM susp.
373	Medic specialist	Med.de familie	S	1.00	5	vacant
374	Medic specialist	Med.de urgenta	S	1.00	5	vacant
375	Medic specialist	Med.de urgenta	S	1.00	5	vacant
376	Medic specialist	Med.de urgenta	S	1.00	5	vacant
377	Medic specialist	Med.de urgenta	S	1.00	5	vacant
378	Medic specialist	Med.de familie	S	1.00	5	
379	Medic specialist	medicina de urgenta	S	1.00	2	
380	Medic primar	Medicina de fam	S	1.00	5	

Personal sanitar mediu

381	Asistenta medicala	Medicala	PL	1.00	5	vacant
382	Asistenta Principala	Medicala	PL	1.00	5	
383	Asistenta Principala	Medicala	PL	1.00	4	
384	Asistenta Principala	Medicala	PL	1.00	5	
385	Asistenta Principala	Medicala	PL	1.00	5	
386	Asistenta Principala	Medicala	PL	1.00	5	
387	Asistenta Principala Sef	Medicala	PL	1.00	4	
388	Asistenta Principala	Medicala	PL	1.00	4	
389	Asistenta medicala	Medicala	PL	1.00	3	
390	Asistenta medicala	Medicala	PL	1.00	baza	
391	Asistenta medicala	Medicala	S	1.00	baza	
392	Asistent medical	Medicala	PL	1.00	2	
393	Asistent Principala	Medicala	PL	1.00	2	
394	Asistent medicala	Medicala	PL	1.00	2	vacant

Personal sanitar auxiliar

395	Brancardier		G	1.00	5	
396	Brancardier		G	1.00	5	
397	Brancardier		G	1.00	5	
398	Brancardier		G	1.00	5	
399	Infirmier		G	1.00	4	
400	Brancardier		G	1.00	5	
401	Brancardier		G	1.00	3	
402	Brancardier		G	1.00	5	
403	Ingrijitor		G	1.00	2	vacant
404	Ingrijitor		G	1.00	2	vacant
405	Ingrijitor		G	1.00	2	
406	Registrator medical		M	1.00	2	
407	Registrator medical		M	1.00	2	

408	Registrator medical		M	1.00	5	
-----	---------------------	--	---	------	---	--

1.9.13 Farmacie ; suprafata curatenie: 353 mp

Personal sanitar superior

409	Farmacist Sef	Farmacie	S	1.00	5	vacant
410	Farmacist rezident an III	Farmacie	S	1.00	5	
411	Farmacist		s	1.00	3	

Personal sanitar mediu

412	Asistenta Principala	Farmacie	PL	1.00	5	
413	Asistenta Principala	Farmacie	PL	1.00	5	vacant
414	Asistenta Principala	Farmacie	PL	1.00	5	
415	Asistent medical	Farmacie	PL	1.00	baza	

Personal sanitar auxiliar

416	Ingrijitor		G	1.00	5	
-----	------------	--	---	------	---	--

1.9.14 Sala nasteni

Personal sanitar mediu

417	Asistenta Medicala princ.	Medicala	PL	1.00	3	
418	Asistenta Principala	Obstr. Ginec.	PL	1.00	5	
419	Asistenta Medicala princ.	Obstr. Ginec.	PL	1.00	5	
420	Asistenta Principala	Obstr. Ginec.	PL	1.00	5	
421	Asistenta medicala Principala	medicala	S	1.00	2	
422	Asistenta Medicala	Obstr. Ginec.	PL	1.00	5	vacant

1.9.15 Bloc Operator; suprafata curatenie:353mp

Personal sanitar mediu-bl.op.chirurgie

423	Asistenta Principala Sefa	Medicala	PL	1.00	5	vacant
424	Asistenta Principala	Medicala	PL	1.00	5	
425	Asistenta Principala	Medicala	PL	1.00	5	
426	Asistenta Principala	Medicala	PL	1.00	5	
427	Asistenta Principala	Medicala	PL	1.00	5	
428	Asistenta Principala	Medicala	PL	1.00	5	
429	Asistenta Principala	Medicala	PL	1.00	5	
430	Asistenta Principala	Medicala	PL	1.00	5	
431	Asistenta Principala	Medicala	PL	1.00	4	
432	Asistenta Medicala	Medicala	PL	1.00	4	vacant
433	Asistenta Medicala	Medicala	PL	1.00	4	vacant

Sterilizare

Personal sanitar mediu

434	Asistenta Principala	Medicala	PL	1.00	4	
435	Asistenta Principala	Medicala	PL	1.00	3	

Personal sanitar auxiliar

436	Infirmier		G	1.00	5	
437	Infirmier		G	1.00	5	
438	Infirmier		G	1.00	4	
439	Ingrijitor		G	1.00	baza	
440	Ingrijitor		G	1.00	3	
441	Ingrijitor		G	1.00	3	vacant
442	Ingrijitor		G	1.00	3	vacant
443	BRANCARDIER		G	1.00	3	vacant

1.9.16 Sala de operatie O G.

Personal sanitar mediu

444	Asistenta Principala	Obstr. Ginec.	PL	1.00	5	
445	Asistenta Principala	Obstr. Ginec.	PL	1.00	5	
446	Asistenta Principala	Obstr. Ginec.	PL	1.00	5	
447	Asistenta Principala Sefa	Obstr. Ginec.	PL	1.00	5	
448	Asistenta Principala	Medicala	PL	1.00	2	vacant

Personal sanitar auxiliar

449	Infirmier		G	1.00	5	
-----	-----------	--	---	------	---	--

1.9.17 Cabinet planificare familiala

Personal sanitar superior

450	Medic specialist	medicina fam	S	1.00	2	vacant
-----	------------------	--------------	---	------	---	--------

1.9.18 Cabinet Medicina Muncii

Personal sanitar superior

451	Medic Primar	Medicina Muncii	S	1.00	5	
-----	--------------	-----------------	---	------	---	--

1.9.19 Laborator analize medicale; suprafata curatenie: 353 mp

Personal sanitar superior

452	Medic Primar - lab. 2 ore/zi	Labor Clinic	S	0.25	5	
453	Biochimist Principal	Biochimie	S	1.00	5	
454	Medic specialist	Lab analize medicale	S	1.00	5	vacant
455	Medic Pnmar - sef lab.	Laborator	S	1.00	5	
456	Medic specialist	Lab. analize med.	S	1.00	2	
457	Medic primar	Lab. analize med.	S	1.00	2	vacant

Personal sanitar mediu

458	Asistenta Medicala	Laborator	S	1.00	baza	
459	Asistenta Principala	Medicala	PL	1.00	3	
460	Asistenta Principala	Laborator	PL	1.00	5	
461	Asistenta Principala	Laborator	PL	1.00	5	
462	Asistenta Principala	Laborator	PL	1.00	5	vacant
463	Asistenta Principala	Laborator	PL	1.00	4	
464	Asistenta Principala-sefa	Laborator	PL	1.00	4	
465	Asistenta Principala	Laborator	PL	1.00	4	

466	Asistenta Medicala	Laborator	PL	1.00	5	vacant
467	Registrator med.princ	Laborator	M	1.00	5	

Personal sanitar auxiliar

468	Ingrijitor		G	1.00	5	
-----	------------	--	---	------	---	--

1.9.20 Laborator Radiologie si Imagistica Medicala; suprafata curatenie: 310 mp

Personal sanitar superior

469	Medic specialist	Radiodiagnostic	S	1.00	2	vacant
470	Medic Primar Sef	Rad.Img.Med.	S	1.00	5	vacant
471	Medic Primar	Rad.Img.Med.	S	1.00	5	
472	Medic specialist	Rad.Img.Med.	S	1.00	1	
473	Medic Rezident an III	Rad.Img.Med.	S	1.00	baza	

Personal sanitar mediu

474	Asistenta Principala	Radiologie	PL	1.00	5	
475	Asistenta Principala	Radiologie	PL	1.00	5	
476	Asistenta Medicala	Radiologie	PL	1.00	4	
477	Asistenta Medicala	Radiologie	PL	1.00	5	
478	Asistenta Principala	Radiologie	PL	1.00	4	
479	Asistenta Medicala	Radiologie	PL	1.00	5	
480	Asistenta Medicala	Radiologie	PL	1.00	5	vacant
481	Asistenta Medicala	Radiologie	PL	1.00	3	
482	Asistenta Medicala	Radiologie	PL	1.00	baza	

Personal sanitar auxiliar

483	Ingrijitor		G	1.00	5	
-----	------------	--	---	------	---	--

1.9.21 Compartiment endoscopie digestiva

Personal sanitar superior

484	Medic specialist	gastroenterologie	S	1.00	1	vacant
-----	------------------	-------------------	---	------	---	--------

Personal sanitar mediu

435	Asistent Principal	GASTROENTEROLOGIE	PL	1.00	3	vacant
-----	--------------------	-------------------	----	------	---	--------

1.9.22 Compartiment Explorari Functionale

Personal sanitar mediu

485	Asistenta Medicala	Medicala	PL	1.00	2	
-----	--------------------	----------	----	------	---	--

1.9.23 Serviciul de Anatomie Patologica

Personal sanitar superior

487	Medic Primar	Anat.Patolog.	S	1.00	5	
488	Medic specialist	Anat.Patolog.	S	1.00	2	
489	Medic specialist	Anat.Patolog.	S	1.00	1	

1.9.23.1 Compartiment histopatologie

Personal sanitar mediu

490	Asistenta Principala	Anat.Patologica	PL	1.00	5	
491	Asistenta Principala	Medicala	PL	1.00	5	

1.9.23.2 Compartiment citologie

Personal sanitar mediu

492	Asistenta Principala	Laborator	PL	1.00	5	vacant
-----	----------------------	-----------	----	------	---	--------

1.9.23.3 Prosectura

Personal sanitar mediu

493	Asistenta Principala	Anat.Patolg	PL	1.00	5	
-----	----------------------	-------------	----	------	---	--

Personal sanitar auxiliar

494	Ingrijitor		G	1.00	5	
495	Autopser		M	0.50	5	

1.9.24 Centru de Sanatate Mintala cu Stationar de zi 10 locuri; suprafata curatenie: 415 mp

Personal sanitar superior

496	Medic primar Sef	Psihatrie	S	1.00	4	vacant
497	Medic Primar	Psihatrie	S	1.00	4	
498	Medic primar	Psihatrie	S	1.00	3	
499	Medic rezident an IV	Psihatrie	S	1.00	1	
500	Psiholog principal	psihologie	S	1.00	5	

Personal sanitar mediu

501	Asistenta medicala sefa	Medicala	PL	1.00	5	vacant
502	Asistenta Principala	Medicala	PL	1.00	5	
503	Asistenta Principala	Medicala	PL	1.00	5	
504	Ergoterapeut	asistent med.	P.L.	1.00	2	
505	Asistenta Medicala	Medicala	PL	1.00	4	

Personal sanitar auxiliar

506	Ingrijitor		G	1.00	5	
-----	------------	--	---	------	---	--

1.9.25 Dispensar T.B.C.; suprafata curatenie: 242 mp

Personal sanitar superior

507	Medic Specialist	Pneumoftizioli	S	1.00	5	vacant
508	Medic specialist	Pneumologie	S	1.00	2	vacant
509	Medic specialist	Pneumologie	S	1.00	2	vacant

Personal sanitar mediu

510	Referent de specialitate gr.I	Stinte Administrat.	S	1.00	3	
511	Asistenta Principala	Medicala	PL	1.00	5	
512	Asistenta Principala	Medicala	PL	1.00	5	
513	Asistenta Principala	Medicala	PL	1.00	5	

Personal sanitar auxiliar

514	Ingrijitor		G	1.00	4	
-----	------------	--	---	------	---	--

1.9.26 Ambulatoriul integrat cu cabinete in specialitate; suprafata curatenie: 1205 mp

## 1.9.26.1 Medicina Interna

## Personal sanitar mediu

515	Asistenta principala	Medicala	PL	1.00	5	
-----	----------------------	----------	----	------	---	--

## 1.9.26.2 Diabet zaharat, nutritie si boli metabolice

## Personal sanitar mediu

516	Asistenta Medicala	Medicala	PL	1.00	2	vacant
-----	--------------------	----------	----	------	---	--------

## 1.9.26.3 Cardiologie

## Personal sanitar mediu

517	Asistenta Medicala	Medicala	PL	1.00	1	
-----	--------------------	----------	----	------	---	--

## 1.9.26.4 Chirurgie Generala

## Personal sanitar mediu

518	Asistenta Principala	Medicala	PL	1.00	5	
-----	----------------------	----------	----	------	---	--

## 1.9.26.5 Urologie

## Personal superior sanitar

519	Medic specialist	Urologie	S	1.00	3	
-----	------------------	----------	---	------	---	--

520	Medic specialist	Urologie	S	1.00	3	vacant
-----	------------------	----------	---	------	---	--------

## Personal sanitar mediu

521	Asistenta Principala	Medicala	PL	1.00	5	vacant
-----	----------------------	----------	----	------	---	--------

## 1.9.26.6 Ortopedie si Traumatologie

## Personal sanitar mediu

522	Asistent medical princ.	Medicala	PL	1.00	3	
-----	-------------------------	----------	----	------	---	--

## 1.9.26.7 Pediatrie

## Personal sanitar mediu

523	Asistenta Principala	Medicala	PL	1.00	2	
-----	----------------------	----------	----	------	---	--

## 1.9.26.8 Obstetrica Ginecologie

## Personal sanitar mediu

524	Asistenta Principala	Medicala	PL	1.00	4	
-----	----------------------	----------	----	------	---	--

525	Asistenta medicala	Medicala	PL	1.00	4	vacant
-----	--------------------	----------	----	------	---	--------

## 1.9.26.9 Neurologie

## Personal sanitar mediu

526	Asistenta Principala	Pediatrice	PL	1.00	5	
-----	----------------------	------------	----	------	---	--

## 1.9.26.10 O.R.L.

## Personal sanitar superior

527	Medic Rezident an II	O.R.L.	S	1.00	2	
-----	----------------------	--------	---	------	---	--

## 1.9.26.11 Recuperare , Medicina Fizica si Balneologie

## Personal superior sanitar

528	Medic specialist	Recuperare medicala	S	1.00	2	vacant
-----	------------------	---------------------	---	------	---	--------

## Personal sanitar mediu

529	Asistent medical princ.	medicala	PL	1.00	5	
-----	-------------------------	----------	----	------	---	--

## 1.9.26.12 Dermatovenerologie

## Personal sanitar mediu

530	Asistenta Medicala	Medicala	PL	1.00	2	vacant
-----	--------------------	----------	----	------	---	--------

## Personal sanitar auxiliar AMBULATOR

531	Ingrijitor		G	1.00	5	
-----	------------	--	---	------	---	--

532	Ingrijitor		G	1.00	5	
-----	------------	--	---	------	---	--

533	Ingrijitor		G	1.00	5	vacant
-----	------------	--	---	------	---	--------

534	Registrator medical		M	1.00	5	
-----	---------------------	--	---	------	---	--

## 1.10 Director financiar- contabil

535	Director Financiar Contabil	Economist	S	1.00	II	
-----	-----------------------------	-----------	---	------	----	--

## 1.10.1 Biroul Financiar- Contabil

## Personal superior

536	Sef Birou	Economist	S	1.00	II	CM
-----	-----------	-----------	---	------	----	----

## Personal mediu

537	Contabil 1A		M	1.00	5	
-----	-------------	--	---	------	---	--

538	Contabil 1 A		M	1.00	5	
-----	--------------	--	---	------	---	--

539	Economist I		S	1.00	5	
-----	-------------	--	---	------	---	--

Manager  
Ec. Timbciu Florentina Perșida, S.A. SĂNĂTĂȚE SA  
ROMANIA  
SOCIETATE SA  
DE ASIGURARE  
FARMACIE  
BIBLIOTECA ADMINISTRATIVE INCLUCSIE LOCALA

Sef birou RU, Juridic  
Jr. Poparad Iuliana